



JOIN CARL AND HIS FRIENDS ON AN ADVENTURE OF A LIFETIME AS THEY FIND THEIR WAY TO PARADISE FALLS!



WELCOME TO PARADISE FALLS - END

START



AVAILABLE ON  &  NOVEMBER 10, 2009

PG 

Distributed by Walt Disney Studios Home Entertainment © Disney/Pixar.



Disney • PIXAR

Spot the Differences



Look very closely and try to spot seven differences in the two pictures below.
For more clues, check out *Up* on Disney Deluxe Blu-ray™ or DVD!



Answers: 1) Kevin's head feather missing. 2) Kevin's face color change. 3) Russell's arm patch missing. 4) Russell's blue pill missing. 5) Russell's trumpet mark missing. 6) Carl's lapel pin missing. 7) Paradise Falls missing.

AVAILABLE ON  &  NOVEMBER 10, 2009

PG

Distributed by Walt Disney Studios Home Entertainment © Disney/Pixar.



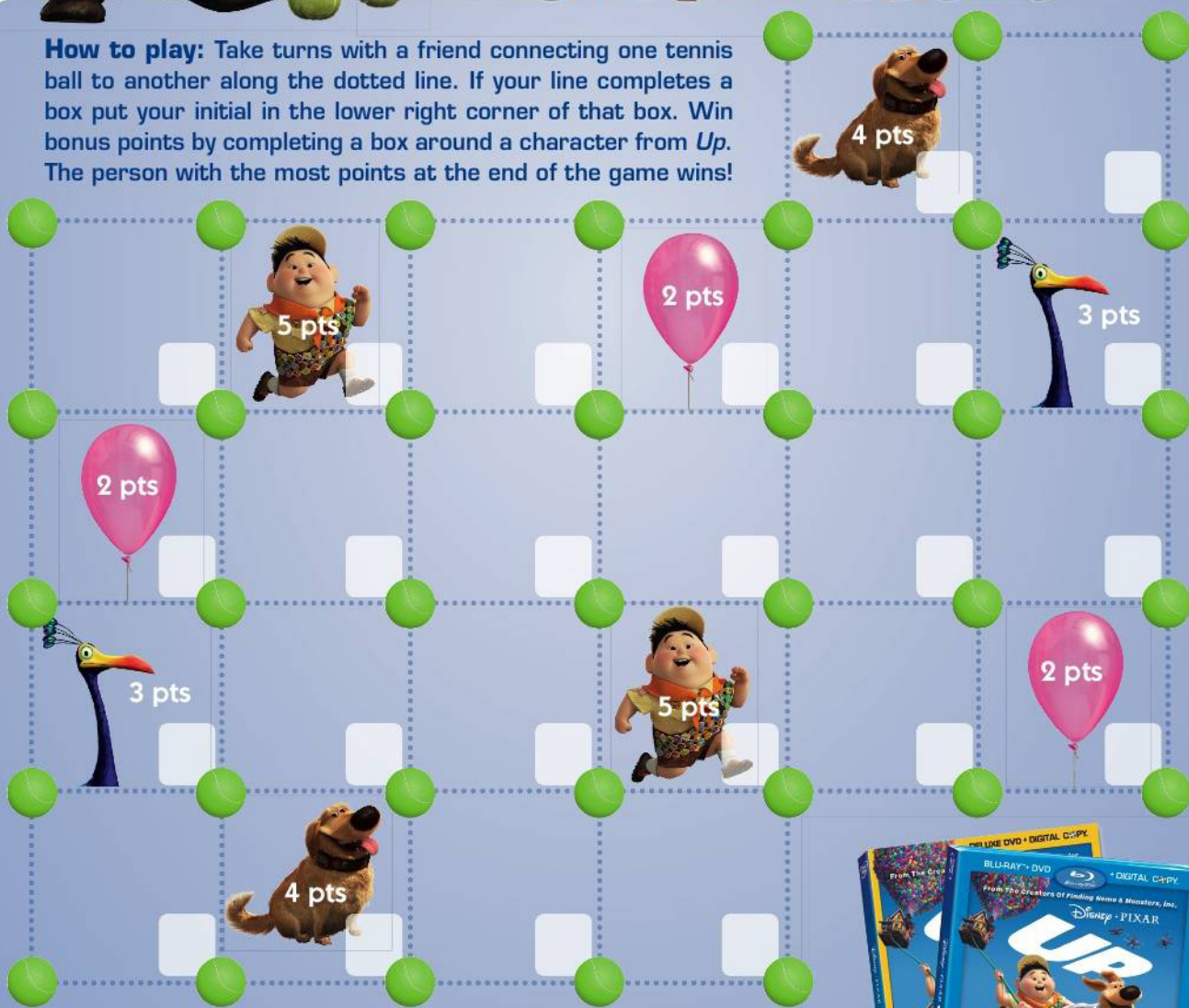


Disney · PIXAR



CARL'S TENNIS BALL CHALLENGE!

How to play: Take turns with a friend connecting one tennis ball to another along the dotted line. If your line completes a box put your initial in the lower right corner of that box. Win bonus points by completing a box around a character from *Up*. The person with the most points at the end of the game wins!



AVAILABLE ON  &  NOVEMBER 10, 2009

Distributed by Walt Disney Studios Home Entertainment © Disney/Pixar.





BALLOON SCIENCE FUN

Have you ever wondered how many helium balloons it would take to lift different objects *Up* into the air?

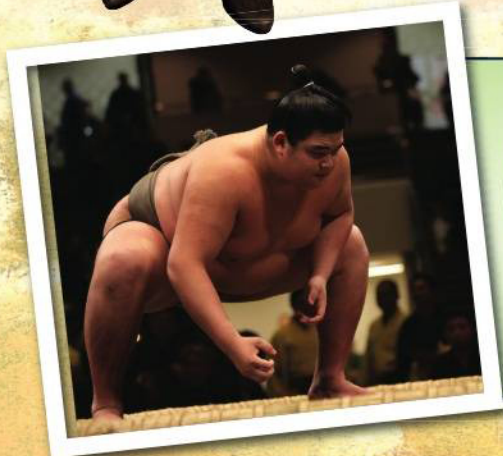
It's a tricky question and an even trickier answer because there are so many variables to consider. For instance:

- How big are the balloons?
- How heavy is the object?
- How quickly do you want the object to rise *Up*?

We have come *Up* with a general formula you can use to figure out how many balloons it would take to lift... well, just about anything!

- Helium has a lifting force of about 1 gram per liter.
- An average size party balloon is approximately 30cm (one foot) in diameter.
- It can hold approximately 14 liters.
- That's 14 grams of lift power per balloon.
- Estimate and subtract the weight of the string and the latex balloon.
- Formula: 1 balloon = 10 grams of lift power.

How Many Balloons Would It Take To Lift:



148,000
Balloons

A Sumo Wrestler?

The average weight of a Sumo wrestler is approximately 148 kg (or 326 lbs). That means it would take about 148,000 balloons to send this guy *Up*.

Fun Fact:
Sumo wrestling was established as a national sport in 1909.

A Bicycle?

The average bicycle weighs approximately 19 kilograms (or 42 lbs). You will need approximately 1,900 balloons to turn this 2-wheeler into an *air-bike*.

Fun Fact: Before the Wright Brothers built their first flying airplane in 1903, they operated a small bicycle repair shop.

1,900
Balloons



3,200
Balloons

Your Neighbor's Dog?

This happy Labrador Retriever dog weighs in at 32 kg (70 lbs). It would take approximately 3200 to lift this furry friend off the ground

Fun Fact:
The voice of Dug (the Dog) in the movie *Up* is actually the voice of Co-Director / Screenwriter, Bob Peterson.



A Small House?

This figure can vary in terms of quantity of balloons given the size and scale of the house. Let's say the house in Disney/Pixar's movie *Up* weighed about 46,000 kg (that's 101,413 lbs). That means it takes approximately 4,600,000 balloons to send Carl's home *Up* and away!

Fun Fact:
Nearly 70 animators worked on the movie *Up* during peak production.

4,600,000
Balloons

A Blu-ray Disc™ Player

Most models weigh just over 2 kg (4.5 lbs.) which requires 200 balloons to add a whole new meaning to Blu-ray™ "high definition."



200
Balloons

22
Balloons

Disney·Pixar's *Up* Blu-ray™ Combo Pack

At approximately 227 grams (or 0.5 lbs) in weight, it requires approximately 22 balloons to send the movie *Up*, up and away!



AVAILABLE ON & NOVEMBER 10, 2009

Distributed by Walt Disney Studios Home Entertainment © Disney/Pixar.

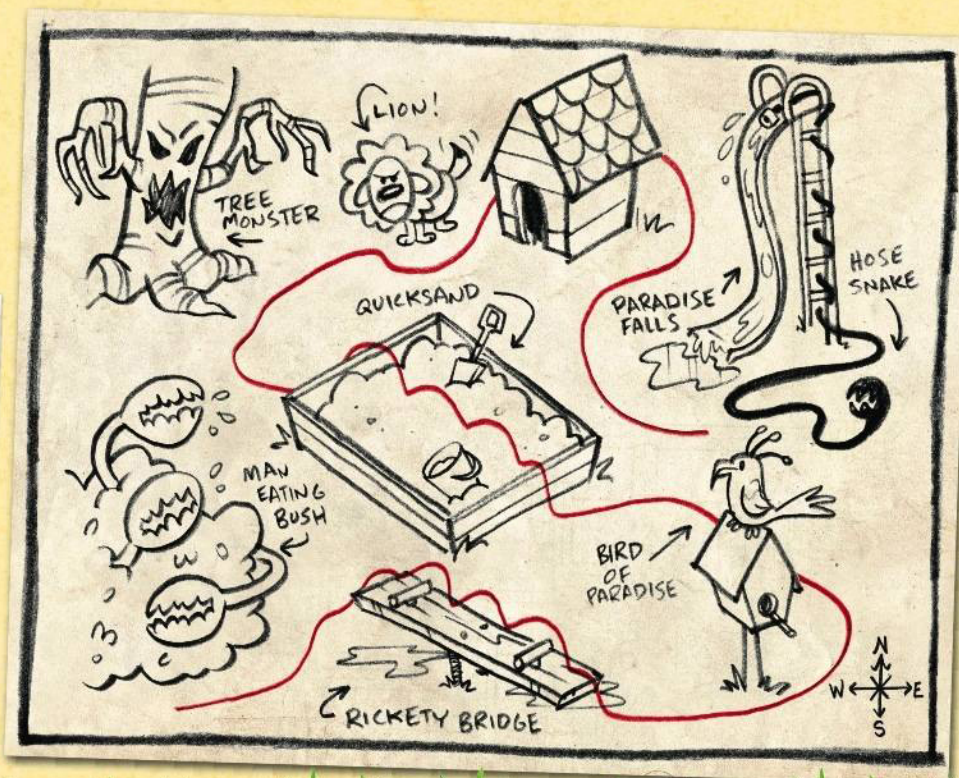


ADVENTURES IN YOUR OWN BACKYARD!

USE YOUR IMAGINATION TO TRANSFORM
YOUR BACKYARD, LOCAL PARK OR EVEN
YOUR OWN LIVING ROOM INTO A WORLD OF
ADVENTURE AND MAKE IT YOUR MISSION TO
DISCOVER THE REAL PARADISE FALLS!

MAP IT OUT!

1 Choose a location. 2 Ask a grandparent or parent to help you make your adventure map. 3 Figure out your mission and come up with ideas to map out a world of adventure! Turn hedges into dangerous man eating plants and make hoses into giant poisonous snakes. Whatever you can imagine! 4 Draw out your map. 5 Draw a line to show the path of your mission.



BE PREPARED!

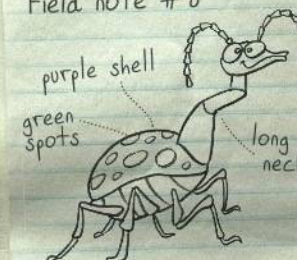
Gear up for the adventure!
Use a checklist to prepare your backpack.

MY ADVENTURE CHECKLIST

- | | |
|---|--|
| <input checked="" type="checkbox"/> Imagination | <input type="checkbox"/> Pen and Paper |
| <input type="checkbox"/> Favorite Companion | <input type="checkbox"/> _____ |
| <input type="checkbox"/> Binoculars | <input type="checkbox"/> _____ |
| <input type="checkbox"/> Canteen | <input type="checkbox"/> _____ |
| <input type="checkbox"/> Compass | <input type="checkbox"/> _____ |
| <input type="checkbox"/> Food | <input type="checkbox"/> _____ |
| <input type="checkbox"/> Flashlight | <input type="checkbox"/> _____ |
| <input type="checkbox"/> Camera | <input type="checkbox"/> _____ |

RESEARCH & DISCOVER!

Field note #8

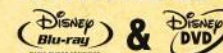


AMAZING DISCOVERY!!!
Subject appears to be a
MakuMaku Beetle. Thought
to be extinct... until now.

When you allow yourself to use your imagination, common bugs and leaves can become real scientific breakthroughs! Be the first to discover exotic creatures and plant life never-before-seen by man! Remember, part of the adventure is what you discover along the way!

For more great
adventures check
out the Blu-ray™
Combo Pack or
Deluxe DVD of *Up*!

AVAILABLE ON



November 10, 2009

